

RESPONSIBLE RESEARCH AND INNOVATION

THE GLOBAL CENTRE FOR RISK AND INNOVATION

Fostering a Sustainable Future Through
Innovation and Collaboration

WWW.THERISK.GLOBAL

Copyright © 2023. All Rights Reserved.



SPECIAL CONSULTATIVE STATUS WITH United Nations Economic and Social Council (ECOSOC)

Addressing key economic and social challenges, including aging, biodiversity, climate change, and human rights, with a strong focus on sustainable development. We actively engage in financing for development, addressing systemic financial issues and advocating for equitable international trade. GCRI is significantly involved in reducing risks, poverty and advancing gender issues, focusing on rights based and nature based solutions, education, and empowerment. Its work in population dynamics encompasses international migration and demographic balance. In public administration, GCRI enhances governance, financial management, and open data, promoting transparency, accountability and trust



CIVIL SOCIETY MEMBER

International Monetary Fund & World Bank

Engaging in critical policy dialogues, offering insights on macroeconomic policies and sustainable development, while also advocating for inclusive and environmentally conscious economic strategies. We partner with communities in project implementation, focusing on areas like risk management and technological innovation to enhance project effectiveness and impact. Our contributions extend to joint research initiatives, providing crucial data and analysis to inform policy decisions. Through participation in global forums and capacity-building initiatives, particularly in developing regions, GCRI ensures that local insights and needs are integrated into global economic agendas. This active engagement facilitates GCRI's mission to influence global economic policies and practices towards more sustainable, resilient, and equitable outcomes for all

THE GLOBAL CENTRE FOR RISK AND INNOVATION (GCRI)

International non-profit organization dedicated to pioneering global risk management, resilience and sustainability through multilateral cooperation, standardization and acceleration

- **Global pioneer** in risk and innovation management
- **Responsible research** and innovation ecosystem
- **Anticipatory action** plans for global risks mitigation
- **Food-energy-water-health** nexus security and sustainability
- **Civic infrastructure** for disaster risk reduction
- **Upgrade** of international environmental law
- **Advancing** international standards in risk management
- **Capacity building** programs at local, national, regional levels
- **Just transition**, digital transformation, sustainable development



In Special Consultative Status with The United Nations Economic and Social Council ECOSOC (since 2023)



Global Impact Award Winner for Covid-19 recovery programs 2021



Civil Society Organizations (CSO) member of of World Bank and IMF (since 2019)



Sustainable Development Solutions Network (SDSN) member since 2019



Incorporated as non-profit under Innovation, Science and Economic Development Canada (ISED) 2018

MISSION/VISION

BUILDING RESILIENCE FOR SUSTAINABLE DEVELOPMENT

As a centre of excellence, GCRI excels in research, innovation, and capacity building across enterprise risk and innovation management, addressing the societal impacts of technological disruptions and financial evolution. Uniting experts from economics, finance, policy, and technology, we are committed to building interdisciplinary tools, capacities, and communities for risk mitigation, resilience building, and sustainable development

- **Mission:** Address global sustainability challenges through innovative technologies and collaborative networks
- **Vision:** A resilient, sustainable future for all through proactive risk management and responsible innovation
- **Core Values:** Innovation, reusability, multidisciplinary, sustainability
- **Focus Areas:** Environmental monitoring, risk management, sustainable development
- **Stakeholders:** Governments, academia, industry, civil society, local communities
- **Approach:** Leveraging cutting-edge technologies and collective intelligence

NEXUS ECOSYSTEM

RESPONSIBLE RESEARCH AND INNOVATION (RRI)

Nexus Ecosystem addresses the pressing challenges industries face in risk management, including regulatory compliance, cybersecurity, and sustainability. It provides a comprehensive framework for RRI projects, utilizing advanced technologies and a credit-based system to ensure efficient and impactful outcomes

- **Foundation:** Responsible Research and Innovation (RRI) infrastructure
- **Technology Integration:** AI, blockchain, Industrial IoT (IIoT), and quantum computing
- **Collaboration:** Diverse stakeholders including governments, academia, and industry
- **Ethical Standards:** Ensuring all initiatives are ethically sound and socially inclusive
- **Global Alignment:** Initiatives aligned with international sustainability goals
- **Resource Optimization:** Creating robust solutions for resource management and environmental monitoring

GLOBAL RISKS FORUM

EVENTS, MEDIA, CONFERENCES, HACKATHONS

The mission of GRF is to establish a premier global platform addressing financial risks, economic resilience, and sustainable finance through thought leadership, innovative solutions, and inclusive stakeholder engagement. With global economic volatility and rising geopolitical tensions, GRF aims to drive meaningful change by promoting anticipatory actions and forecast-based financing for sustainable development. GRF 2025 will focus on developing frameworks for anticipatory climate finance, aiming to mobilize billions annually in sustainable development funding

- **Annual Event:** Held in Geneva, targeting financial industry and policymakers
- **Platform:** High-level discussions and collaborations on global risk management
- **Complementarity:** Supports UNDRR's Global Platform with actionable insights
- **Policy Influence:** Shapes policies and mobilizes resources for sustainable development
- **Networking:** Fosters partnerships among key stakeholders
- **Outcomes:** Develops and showcases investable solutions for pressing global risks

GLOBAL RISKS ALLIANCE (GRA)

INTERNATIONAL CONSORTIUM FOR RISK, RESILIENCE AND SUSTAINABILITY

The GRA spearheads a revolutionary framework for global risk management through anticipatory action plans (AAP) and disaster risk reduction (DRR) by leveraging a consortium blockchain protocol within the Nexus Ecosystem with AI, IoT, quantum-cloud and big data integration. The alliance fosters technical diplomacy and unprecedented collaboration among diverse stakeholders, enhances predictive capabilities, and drives sustainable development through anticipatory action and innovative governance models

- **Purpose:** Address and manage global risks through collaborative efforts
- **Formation:** Supports Earth Cooperation Treaty (ECT) and Pact for the Future
- **Expertise:** Leverages combined expertise and resources of members
- **Focus:** Nexus Standards, systems thinking, portfolio development, collective security
- **Innovation:** Technical diplomacy, prototype solutions, anticipatory action plans
- **Strategy:** Enhances global risk awareness, preparedness, and response strategies

OBSERVATORY PROTOCOL

DECENTRALIZED WIRELESS NETWORK

Observatory Protocol leverages cutting-edge decentralized wireless network architecture, quantum-resistant blockchain, federated AI, and nano-IoT technologies to create a decentralized, fault-tolerant system for global disaster risk reduction. Utilizing open-source, collaborative technologies and decentralized, stakeholder-led governance, the protocol promotes inclusive growth and social, environmental, and economic sustainability

- **Foundation:** Integrates blockchain, AI/ML, IIoT, and quantum computing
- **5G and 6G Networks:** Utilizes high-speed, low-latency communication for real-time data flow
- **Real-Time Monitoring:** Collects and analyzes environmental data
- **Global Network:** Connects observatories, research institutions, and communities
- **Proactive Management:** Predicts and responds to emerging risks effectively
- **Collaboration:** Promotes public-private-planet partnerships and technical diplomacy

ANTICIPATORY ACTION PLANS

PIONEERING PROACTIVE RISK MANAGEMENT

Our focus on Anticipatory Action Plans (AAP) involves taking predefined measures based on scientific forecasts and risk analysis to prevent or mitigate the effects of imminent hazards. Anticipatory action plans can include everything from pre-positioning emergency supplies to evacuating vulnerable populations, tailored to the specific risks and needs of the community

- **Pre-Agreed Actions:** Developing specific, actionable steps that can be triggered by forecasted conditions
- **Activation Triggers:** Establishing precise conditions under which these actions are initiated
- **Financing Mechanisms:** Securing and allocating funds to ensure rapid deployment of resources
- **Proactive Strategy:** Predicts and mitigates potential disasters before they occur
- **Early Warning Systems:** Provides timely alerts and actionable information
- **Predictive Modeling:** Uses AI and ML for risk forecasting
- **Community Engagement:** Involves local communities in monitoring and response
- **Capacity Building:** Educates and trains populations for disaster preparedness
- **Policy Advocacy:** Works with policymakers to support sustainable development

PUBLICATIONS

INTERNATIONAL JOURNAL OF GLOBAL RISKS AND GOVERNANCE (IJRG)

The IJRG is poised to become the premier academic journal dedicated to the rigorous examination and management of complex global risks. With a focus on the interplay between emerging technologies, global governance, and sustainable development, IJRG leverages decades of editorial expertise to provide a platform for high-caliber, interdisciplinary research

- **Premier academic journal** dedicated to global risk management
- **Interdisciplinary focus** on emerging technologies and governance
- **Decentralized science (DeSci)** principles for open collaboration
- **Peer review editorial** process ensuring academic excellence
- **Influencing policy and practice** through high-impact research
- **Global platform** for scholars, policymakers, and practitioners



REPORTS

COUNTRY-SPECIFIC RISK AND DEVELOPMENT ANALYSIS

Provides deep, practical insights into country-specific risks and development opportunities, with a strong foundation in the authoritative data and assessments provided by the Intergovernmental Science-Policy Platform on Biodiversity and Ecosystem Services (IPBES)

- **Deep, practical insights** on country-specific risks and opportunities
- **Foundation in IPBES** assessments for authoritative analysis
- **Multidisciplinary approach** integrating biodiversity, climate, and socio-economic factors
- **Bridging academic rigor** with real-world application
- **Actionable strategies** for sustainable development and
- anticipatory innovation



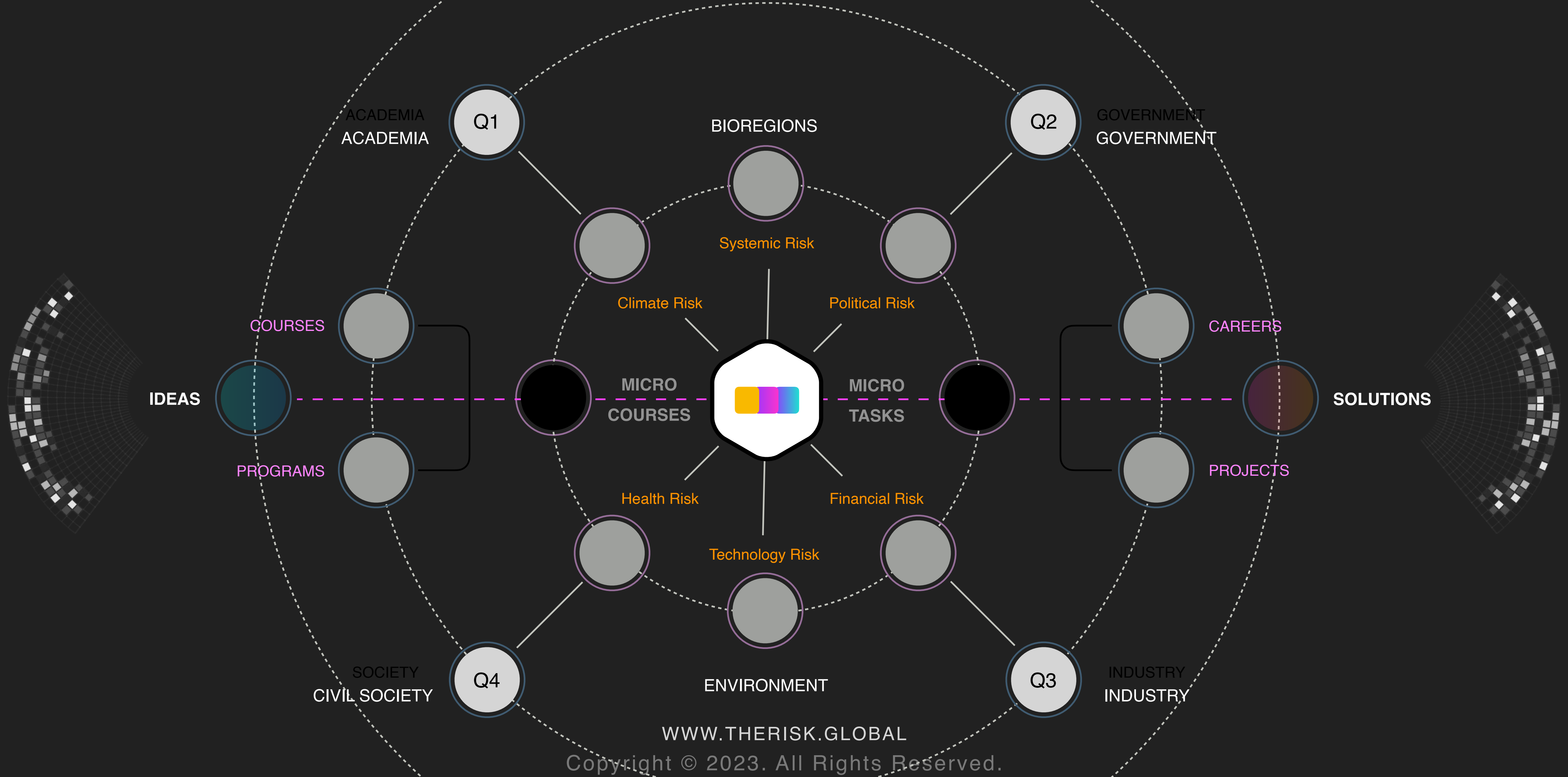
INTEGRATED MECHANISMS

LEARNING, REWARD, PRODUCTION AND INNOVATION

The Nexus Ecosystem is designed as a holistic, interconnected framework that integrates advanced technological solutions with innovative governance models to address global sustainability challenges

- **Integrated Learning Account (ILA):** Provides a lifelong learning pathways with embedded credit rewards for continuous professional development
- **Integrated Credits Rewards System (iCRS):** Incentivizes participation and innovation by rewarding contributions across the ecosystem
- **Work-Integrated Learning Paths (WILPs):** Offers structured learning experiences that integrate academic knowledge with real-world work opportunities
- **Micro-Production Model (MPM):** Promotes decentralized, community-driven production ecosystems to enhance local resilience and sustainability
- **Integrated Value Reporting System (iVRS):** Ensures transparency and accuracy in ESG reporting by leveraging blockchain and AI technologies
- **Global Risks Index (GRiX):** Standardizes and benchmarks risk data, enhancing global awareness and preparedness for various risk categories
- **Decentralized Innovation Commons Ecosystem (DICE):** Fosters cross-sectoral collaboration and innovation through a decentralized data commons, supporting sustainable development initiatives

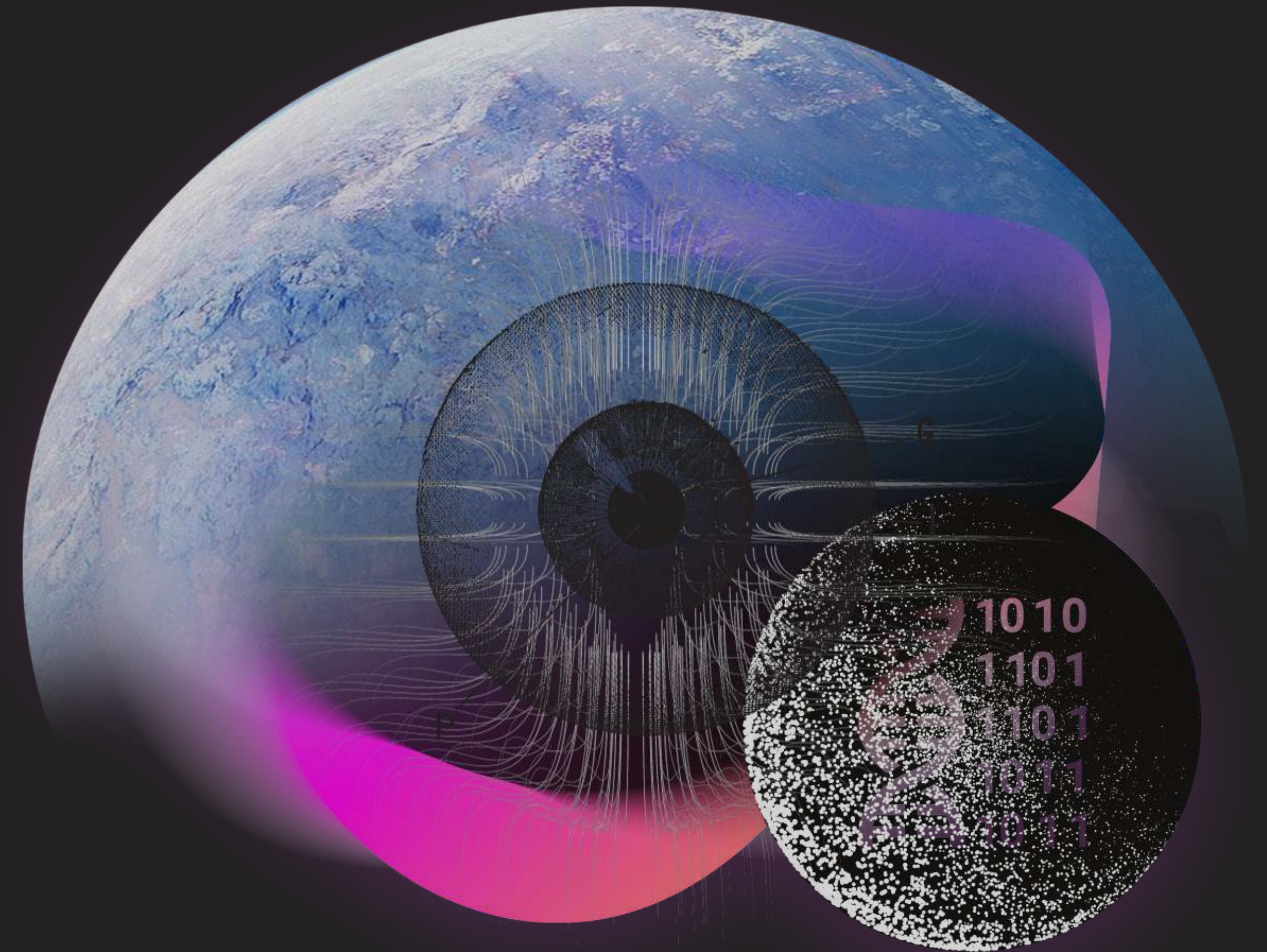
QUINTUPLE HELIX



FLAGSHIP PROJECT

OBSERVATORY PROTOCOL

A pioneering RRI initiative aimed at enhancing global anticipatory action and risk management. It leverages advanced technologies such as AI, machine learning, IoT, and blockchain to collect, analyze, and share real-time data on environmental conditions and hazards. By establishing a global network of observatories, research institutions, and local communities, the protocol facilitates proactive measures, early warning systems, and coordinated disaster responses. It also promotes technical diplomacy by fostering collaboration among governments, academia, private sectors, and civil society organizations to build resilience and sustainability



INTELLIGENCE AND COGNITION

Advancing Intelligent Systems and Ethical AI Solutions

Applications: Autonomous systems, predictive analytics, natural language processing, and computer vision

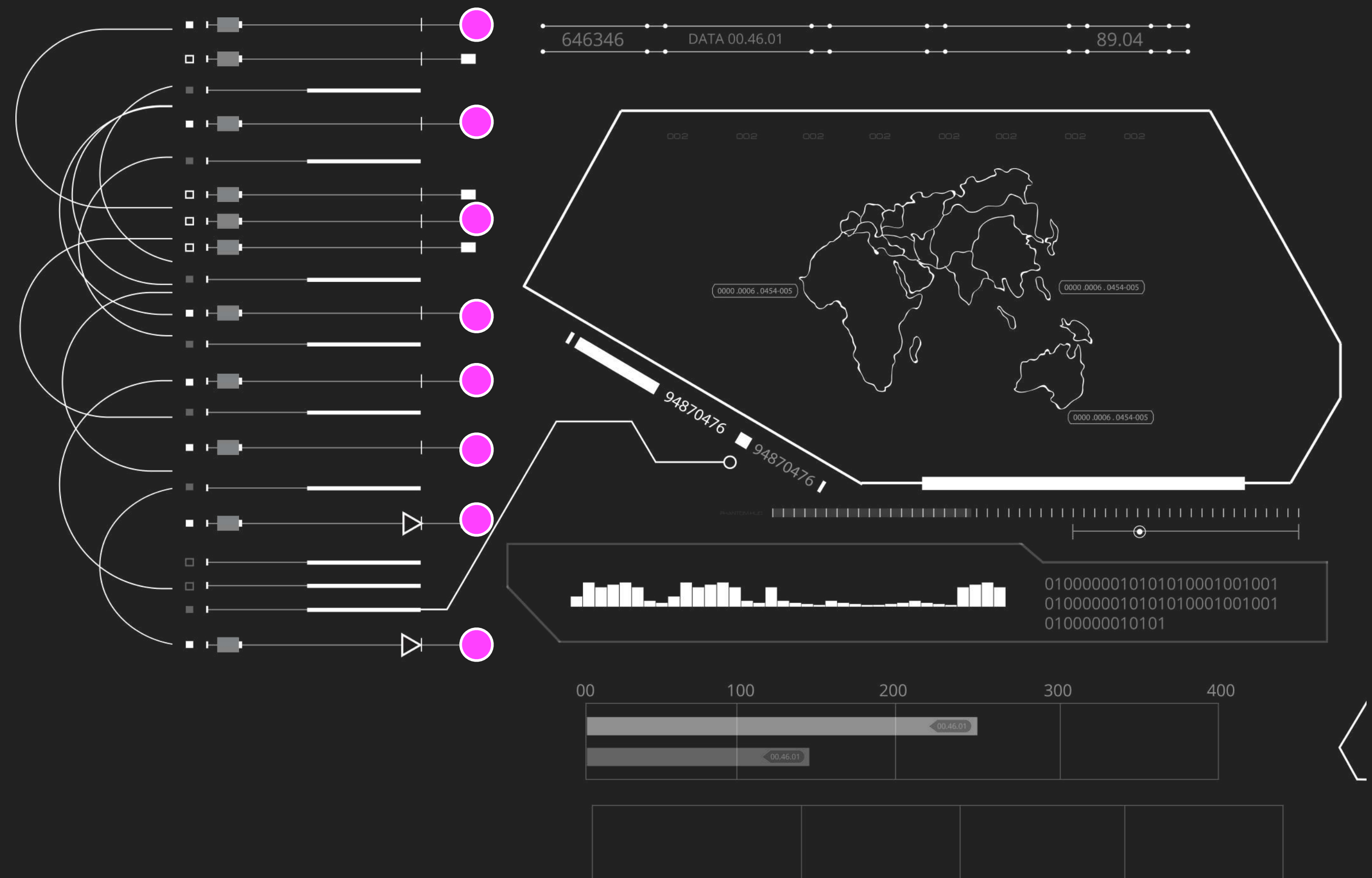
Impact: Revolutionizing industries through automation, enhancing decision-making processes, and creating intelligent applications that learn and adapt over time

- **Deep Learning and Neural Networks:** Advancing the capabilities of AI through more sophisticated neural network architectures
- **Reinforcement Learning:** Developing algorithms that enable machines to learn optimal actions through trial and error
- **Explainable AI (XAI):** Creating AI systems whose decisions and actions are understandable by humans
- **AI Ethics and Bias Mitigation:** Ensuring AI systems are fair, transparent, and free from bias
- **Edge AI:** Implementing AI capabilities directly on devices to reduce latency and increase efficiency

DECISION SUPPORT SYSTEM

DECISION-MAKING WITH DATA-DRIVEN EPISTEMIC KNOWLEDGE

The Decision Support Systems (DSS) stream within the Nexus Ecosystem leverages Responsible Research and Innovation (RRI) principles and collective intelligence to enhance decision-making processes across various domains. By integrating advanced data analytics, AI, and machine learning, DSS provides comprehensive tools that support stakeholders in making informed, transparent, and ethical decisions. These systems are designed to process vast amounts of data, identify patterns, and deliver actionable insights that align with sustainable development goals, ensuring that decisions are both scientifically validated and socially responsible



DECENTRALIZATION AND DISTRIBUTION

Building Secure, Scalable, and Interoperable Decentralized Systems

Applications: Secure and transparent transactions, decentralized finance (DeFi), supply chain management, and digital identity verification

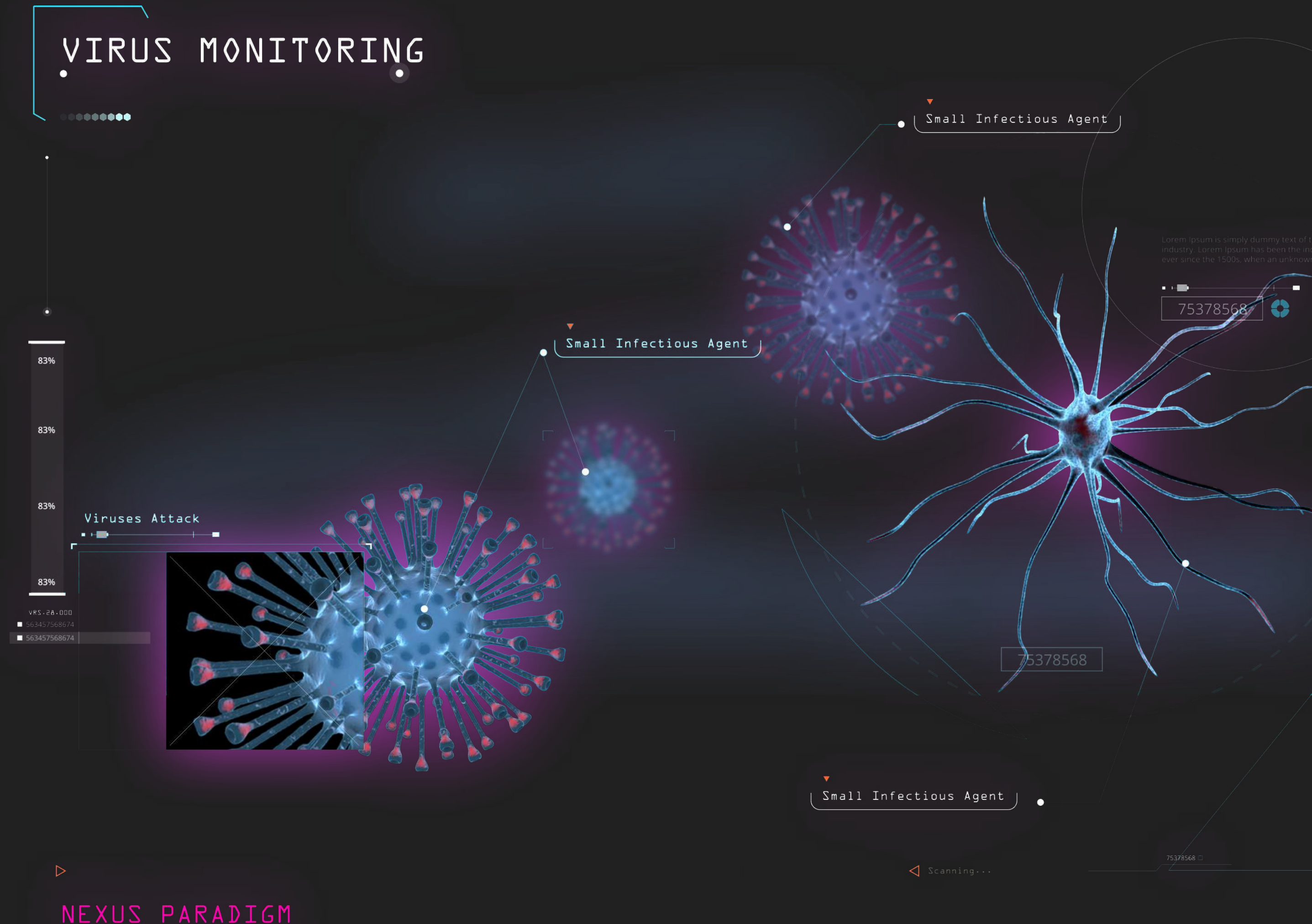
Impact: Increasing trust and security in digital transactions, enabling decentralized applications, and providing immutable records for various industries

- **Consensus Algorithms:** Developing more efficient and secure methods for achieving consensus in distributed networks
- **Scalability Solutions:** Improving the capacity of blockchain networks to handle a larger number of transactions per second
- **Interoperability:** Enabling different blockchain systems to communicate and work together seamlessly
- **Smart Contracts:** Enhancing the functionality, security, and usability of programmable contracts on the blockchain
- **Privacy and Security:** Ensuring the confidentiality and integrity of transactions on the blockchain

EARLY WARNING SYSTEMS

PROACTIVE DISASTER PREPAREDNESS THROUGH REAL-TIME ALERTS

The Early Warning Systems (EWS) stream focuses on developing and deploying advanced systems that can predict and alert stakeholders to impending natural and man-made disasters. Utilizing RRI and collective intelligence, EWS integrates real-time data from IoT sensors, satellite imagery, and historical data to provide accurate and timely warnings. This proactive approach allows communities and authorities to prepare and respond effectively, mitigating the impact of disasters. The systems emphasize inclusivity and accessibility, ensuring that all communities, especially vulnerable populations, receive timely and actionable warnings



NEXUS PARADIGM

SMART CITY, 5G & 6G

Connecting and Securing Smart Devices for a More Efficient World

Applications: Smart cities (enabled by 5G and 6G), connected homes, industrial IoT (IIoT), and telecom

Impact: Connecting physical devices to the internet through 5G and 6G networks, enabling real-time data collection and analysis, and significantly improving efficiency, convenience, and responsiveness in everyday life

- **IoT Security:** Developing robust security protocols to protect connected devices from cyber threats, ensuring the safety and privacy of data transmitted over 5G and 6G networks
- **Edge Computing:** Reducing latency by processing data closer to where it is generated, which is crucial for the real-time applications of IoT in smart cities and industrial settings
- **Interoperability Standards:** Creating universal standards for IoT devices to ensure compatibility and seamless communication across various devices and platforms, facilitated by the advanced 5G and 6G
- **Energy Efficiency:** Improving the power efficiency of IoT devices to extend their battery life and reduce energy consumption, making widespread deployment more sustainable
- **Data Analytics:** Enhancing methods for analyzing the vast amounts of data generated by IoT devices to extract meaningful insights, leveraging the high-speed data transfer capabilities of 5G and 6G networks to process and respond to data in real-time

EMERGENCY MANAGEMENT SYSTEMS

EFFECTIVE CRISIS RESPONSE FOR ENHANCED RESILIENCE

Emergency Management Systems (EMS) are critical for coordinating responses to crises and emergencies. Utilizing RRI and collective intelligence, EMS integrates real-time data, communication networks, and resource management tools to support effective emergency response and recovery. These systems provide a centralized platform for coordinating efforts across different agencies and organizations, ensuring a swift and organized response. EMS emphasizes inclusivity and community engagement, ensuring that all stakeholders are involved in the planning and execution of emergency management strategies, ultimately enhancing resilience and recovery outcomes



QUANTUM COMPUTING

Computational Power for Complex Problem Solving

Applications: Cryptography, drug discovery, complex simulations, and optimization problems

Impact: Solving problems that are currently infeasible for classical computers, advancing scientific research, and transforming industries reliant on complex computations

- **Quantum Algorithms:** Developing algorithms that can exploit the unique capabilities of quantum computers
- **Quantum Cryptography:** Creating unbreakable encryption methods based on the principles of quantum mechanics
- **Error Correction:** Addressing the issue of quantum decoherence and developing techniques for error correction
- **Quantum Supremacy:** Demonstrating quantum advantage by solving specific problems faster than classical computers
- **Quantum Hardware:** Advancing the design and construction of quantum processors and qubits

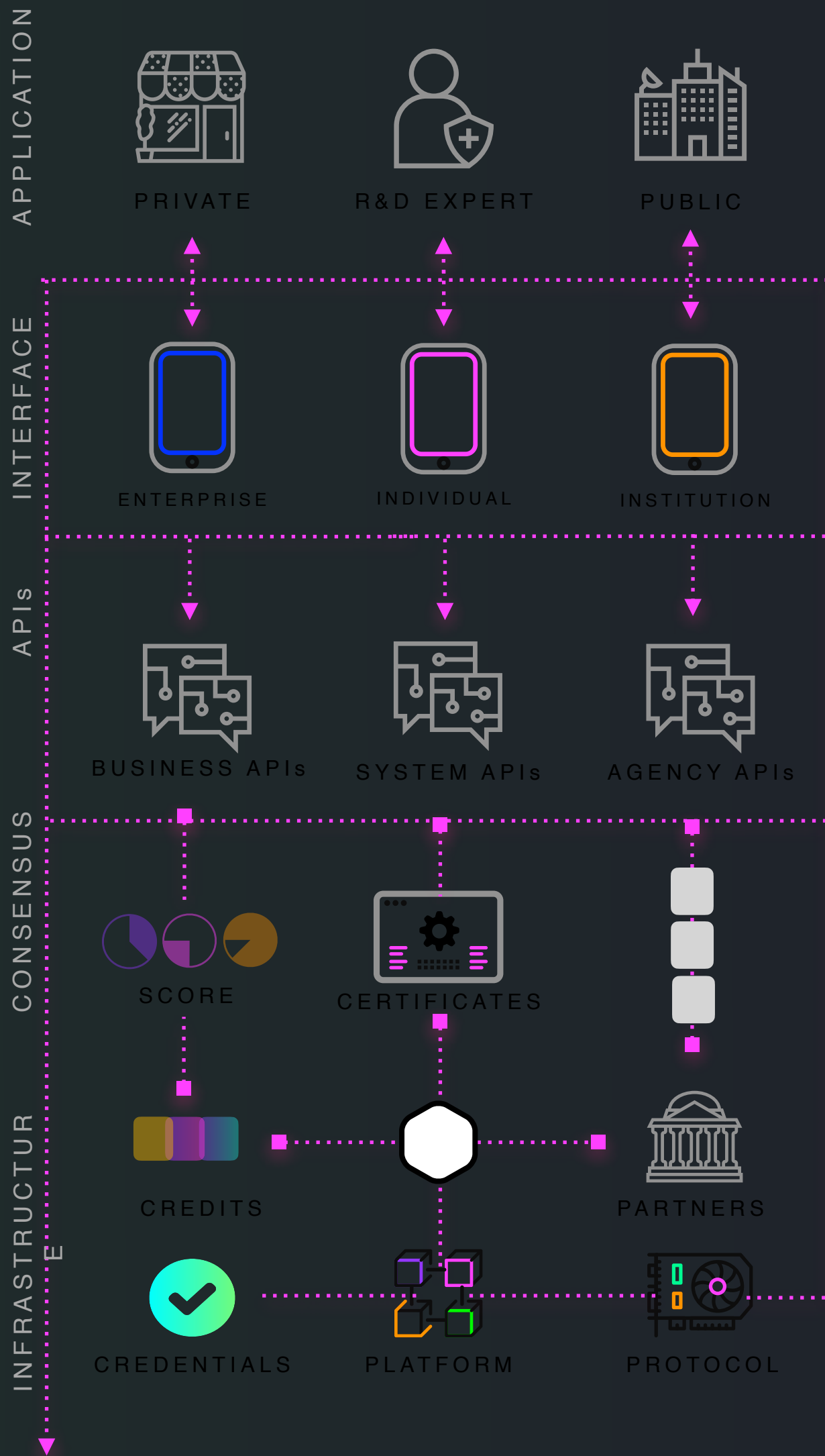
BIO-TECHNOLOGY

Innovating Health-Food-Water Nexus

Applications: Gene editing (e.g., CRISPR), personalized medicine, synthetic biology, and agricultural biotechnology

Impact: Advancing healthcare through targeted treatments and disease prevention, enhancing agricultural productivity, and enabling the creation of new biological products

- **Gene Editing Technologies:** Improving the precision, efficiency, and safety of gene editing tools like CRISPR
- **Genomic Medicine:** Developing personalized treatments based on an individual's genetic makeup
- **Synthetic Biology:** Designing and constructing new biological parts, devices, and systems
- **Agricultural Biotechnology:** Creating genetically modified crops with improved yields, disease resistance, and nutritional value
- **Bioinformatics:** Using computational tools to analyze and interpret biological data



A. LAUNCH



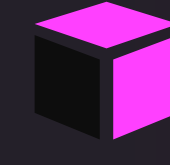
Identify specific industry needs and formulates concrete R&D challenges to address critical issues

B. EXPLORE



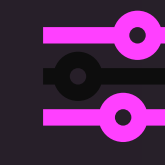
Scout and integrate cutting-edge technologies and experts to tackle the identified challenges

C. ALLOCATE



Strategically allocate resources to ensure the optimal execution of each R&D project

D. AUTOMATE



Leverage advanced automation tools to streamline the development process

E. INNOVATE



Leverage advanced automation tools to streamline the development process



- 1 WALLETS LIBRARY
- 2 REGISTRY API
- 3 AUTHENTICATION API
- 4 VERIFICATION API
- 5 ID HUB API
- 6 VP LIBRARY
- 7 TRUSTED REGISTRIES API
- 8 IAM REGISTRY API
- 9 PLATFORM API
- 10 SECURITY API

The **Futures Innovation Lab** provides platform revolutionizes the industry by integrating cutting-edge technology and innovative practices. The platform offers advanced tools, including AI-driven risk assessment systems, immersive experiences for risk education, and interactive digital learning management systems. It fosters global collaboration by connecting professionals, institutions, and experts through a robust digital ecosystem

- Personalized Profiles
- Achievement Timelines
- Digital Credentials
- Proof of Competence
- Networking Opportunities
- Integrated Learning Paths
- Micro-production Model (MPM)

The dashboard screenshot displays the following components:

- Main Menu:** Dashboard, Email, Forums, Projects, Teams, Calendar, Payouts, Settings.
- Dashboard Overview:**
 - 215 New Credits (62% progress)
 - 84 Goal Progress (38% progress)
 - 59 Projects Emails
 - 2,841 All Projects, 1,456 All Teams
 - 8,642\$ Total income** (with buttons for Request Payout and Redeem Credits)
 - Scheduled Rewards chart showing 456 Points.
- Network:** You have 456 friends. List includes Angela Moss (Project Manager), Andy Law (UI/UX Designer), Benny Kenn (Software Engineer), Chynthia Lawra (ED), Della Samantha (Researcher), and Evans John (Accountant).
- Recent Projects:** 24 projects running on 3 chains and 2 nodes. Includes Environmental Research, ESG Risk Management, Market Data, Real-time Data Collection and Monitoring, Software Development, and Analytics Dashboard Development.
- Table of Invoices:**

ID Invoice	Due Date	Client	Contact	Amount	Status
#INV-0001234	June 1, 2020, 08:22 AM	Higspeed Studios (Creative Agency)	higspeed@mail.com	\$ 1,160.00	Completed
#INV-0001234	June 1, 2020, 08:22 AM	Portaio Inc. (Network Service)	portaio@mail.com	\$ 650.00	Invoice Sent
#INV-0001234	June 1, 2020, 08:22 AM	Jean Graphic Inc. (Online shop)	jeangraphic@mail.com	\$ 2,456.00	Pending
#INV-0001234	June 1, 2020, 08:22 AM	Wedepeloper (Software House)	wedepeloper@mail.com	\$ 1072.00	Completed
#INV-0001234	June 1, 2020, 08:22 AM	Fictiv Home (Software House)	fictiv@mail.com	\$ 12,561.00	Pending
#INV-0001234	June 1, 2020, 08:22 AM	Humbly Humble (Video Games Company)	humblyhumb@mail.com	\$ 2,245.00	Invoice Sent
#INV-0001234	June 1, 2020, 08:22 AM	Fulspeedo Crew (Photograph Agency)	fulspeedo@mail.com		Pending
#INV-0001234	June 1, 2020, 08:22 AM	Ken Graphic Inc. (Creative Agency)	kengraphic@mail.com	\$ 700.00	Invoice Sent
- Pinned Tasks:** UI Design Submission Projects File, Team Workshop: System Innovation Level II, Data Modeling For Offline Operations, Project Plan Management for Stakeholder Engagement.

RESEARCH & DEVELOPMENT

We offer robust and scalable, and integrated infrastructure designed to accelerate and enhance research capabilities. Our **Crowd Source Research Toolkit** provides comprehensive tools with participatory mechanisms and deliverables that empower stakeholders to engage in impactful, data-driven research

Discover Deliverables

- Tenant Settings Review
- Setup File Scanner and Purview
- Create Data Classification Labels

Classify Deliverables

- Content Certification
- Auto Classification of Files/Docs/Emails

Govern Deliverables

- Auditing and Cloud App Security
- Data Loss Protection
- Compliance Manager Setup



SOFTWARE & SYSTEMS

As a pioneering systems integrator, we leverage cutting-edge technologies from industry giants combined with a robust distribution networks. Our agile development approach ensures a seamless integration process, from initial consultation to ongoing support

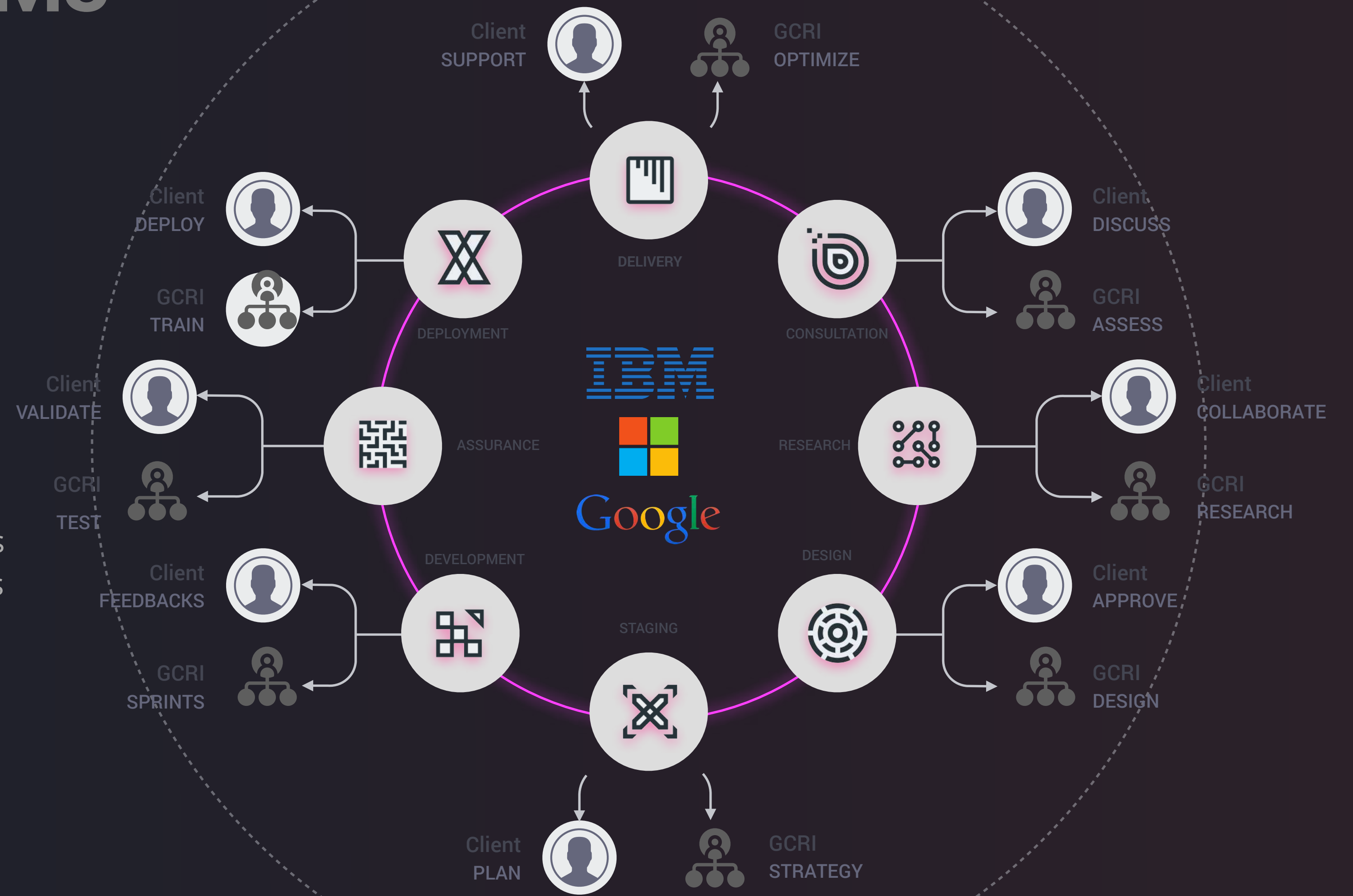
Software: Develop secure, efficient, and scalable software systems

Platform: Design and integrate advanced platforms to ensure seamless, secure, and efficient operations

Solution: Deliver end-to-end solutions that address complex challenges and drive sustainability

Systems: Engineer intelligent systems that enhance safety, efficiency, and resilience

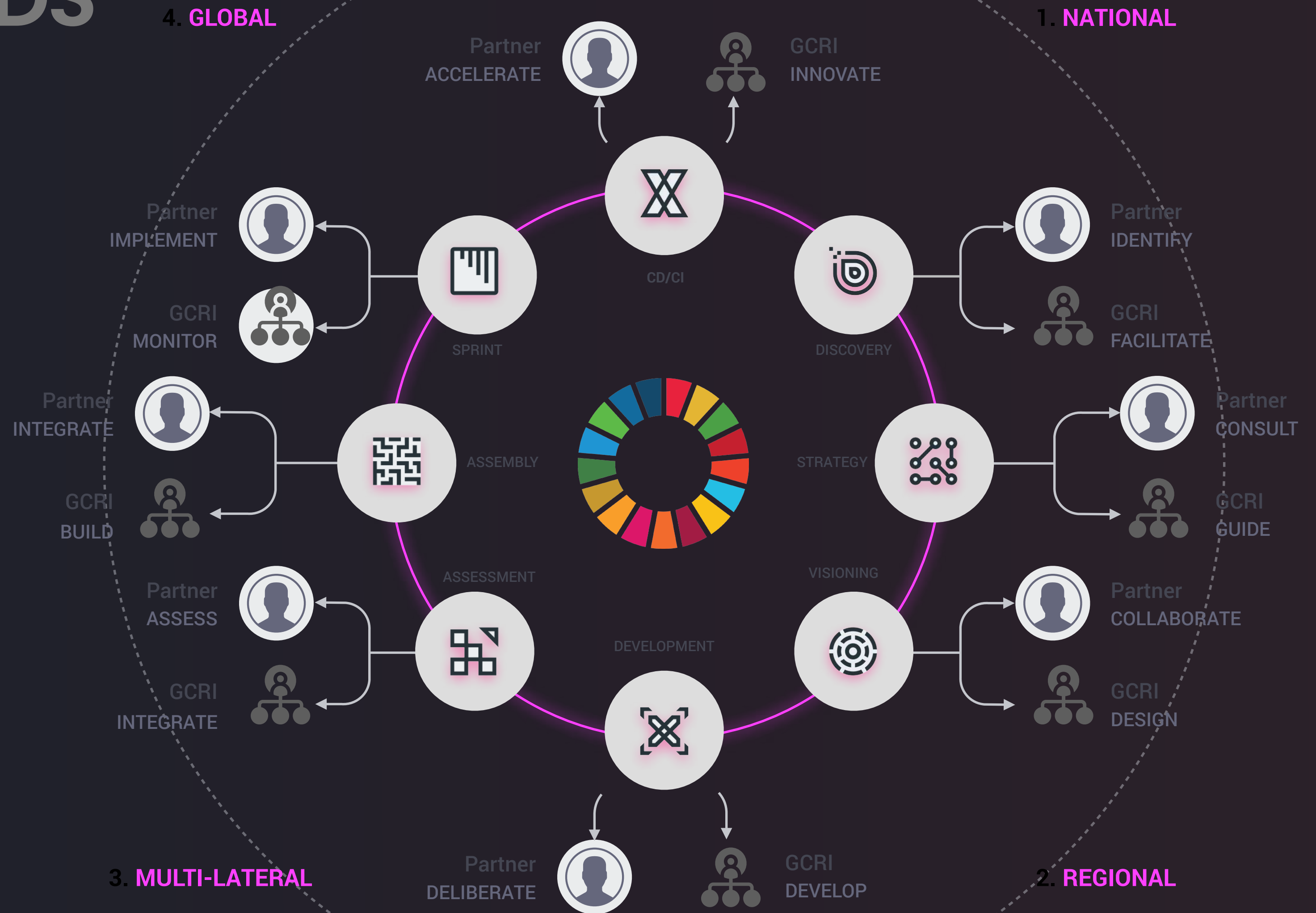
Infrastructure: Build and maintain scalable, secure, and environmentally sustainable infrastructure for the digital age



POLICY & STANDARDS

We deliver strategic policy and standard development through a comprehensive approach including tailored policy frameworks, global initiative, collaborative workshops, pilot testing, capacity building, and continuous support

- **Norms and Standards:** Establishing best practices, norms and standards for risk management, cybersecurity, and sustainability
- **Frameworks:** Designing integrated frameworks that provide a structured approach to identifying, assessing, and mitigating risks, while promoting security and sustainability
- **Innovative Policies:** Crafting integrated and adaptive policies to enhance threat detection, data protection, and resource management
- **Sustainability Focus:** Sustainable practices from energy-efficient computing and renewable energy integration to smart urban infrastructure and community-driven sustainability projects



BIOREGIONS

NEXUS GOVERNANCE

Nexus communities, under the expert guidance of the Nexus Governance leadership, strategically integrate place-based and transnational networks, including indigenous and diaspora groups, to advance sustainable development through Responsible Research and Innovation (RRI)



Nexus Ecosystem leverages the strengths of local and indigenous communities, connecting them with global expertise and resources to foster collaborative projects, facilitate knowledge exchange, and mobilize resources effectively. Anchored in RRI and supported by the latest academic research, Nexus communities ensure that sustainable development initiatives are inclusive, ethically sound, and socially beneficial. The global leadership, with GCRI headquarters strategically located in South Africa, Brazil, Singapore, Switzerland, the UK, UAE, and Canada, provides comprehensive regional coverage, strategic direction, amplifies advocacy efforts, and promotes a cohesive, scientifically validated approach to addressing both local and global challenges, driving impactful and sustainable outcomes aligned with international sustainability goals

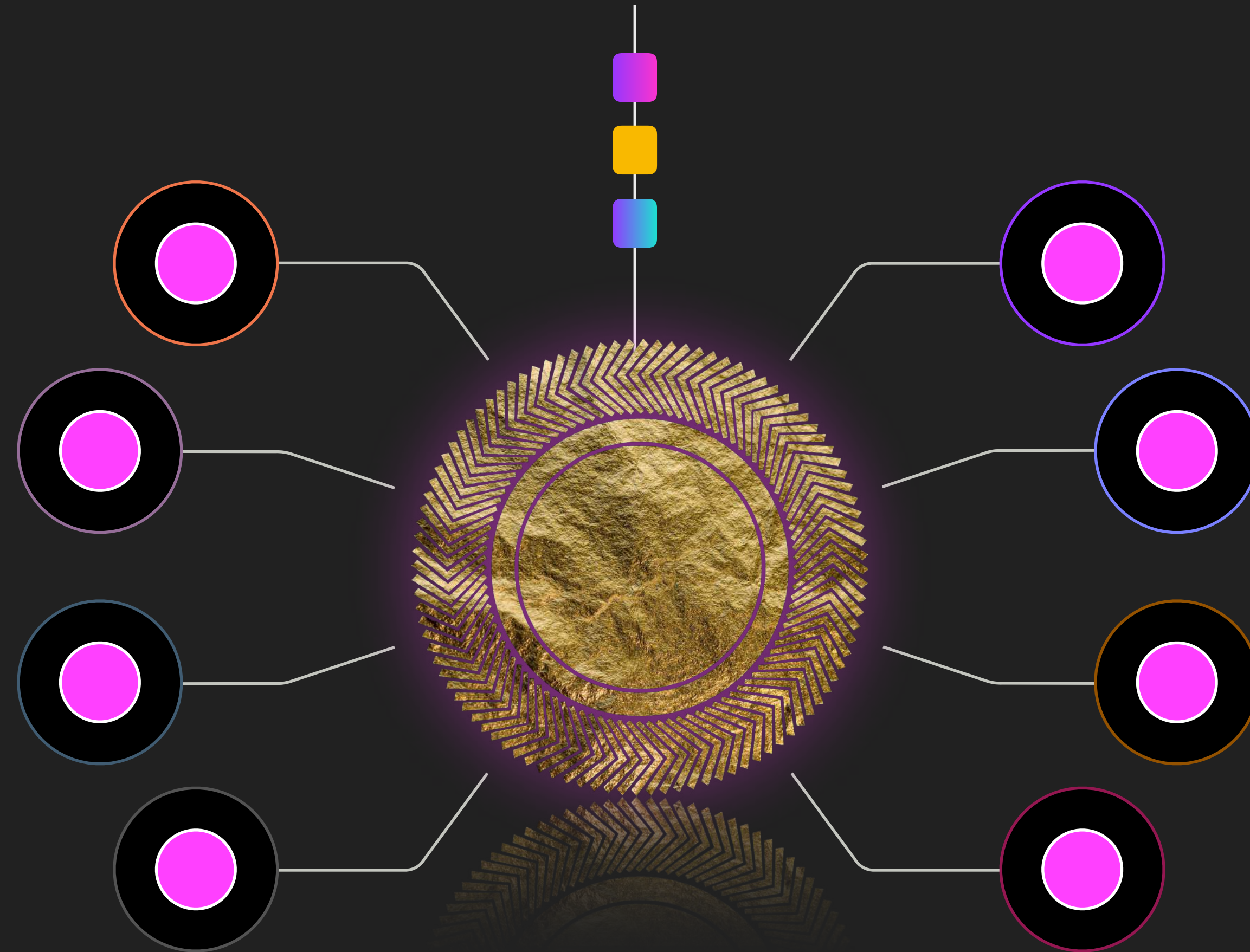
NETWORK

CANADA
Arctic tundra, boreal forests, Rockies, Great Lakes, and deserts to temperate forests, ensuring protection of North America's rich biodiversity

BRAZIL
Amazon Rainforest and Pantanal to Andean ranges, focusing on the conservation of South America's vast and unique ecosystems

SWITZERLAND
Alpine mountains, Scandinavian tundra, Mediterranean coasts, and vast boreal forests, Europe's cultural diversity

SOUTH AFRICA
African bioregions including the Sahara, Congo rainforests, and the Serengeti, focusing on safeguarding the continent's rich biodiversity



UNITED ARAB EMIRATES
Arabian Desert, Nile River valley, and Mediterranean coasts, working to protect unique landscapes and marine areas across the MENA region

SINGAPORE
Himalayas, Southeast Asian rainforests, Central Asian steppes, and East Asian forests protecting Asia's extensive biodiversity

AUSTRALIA
Great Barrier Reef and arid Outback to temperate forests and coastal ecosystems, it focuses on protecting Australia's unique flora and fauna

INDIA
Himalayan ranges to the Western Ghats, the Thar Desert, and the rich riverine plains protect the subcontinent's extensive wildlife, forests, and marine life

1900+ ACADEMIC PARTNERS

Leveraging the SDSN network, we collaborate with world-class institutional partners globally to drive research, innovation, and sustainable solutions

10K+ INDUSTRY PARTNERS

Harnessing the combined technologies of industry giants and emerging innovators, we offer access to over 300,000 products and solutions

10M+ TALENT POOL

With a reserve talent pool of over 10 million through global partners and affiliate student organizations, we ensure a continuous influx of skilled professionals

15M+ GLOBAL REACH

Our integrated nexus platforms provide a digital reach of 15 million monthly, connecting diverse audiences across key disciplines and industries worldwide

100+ COUNTRIES COVERAGE

Covering 100+ countries, our regional stewardship boards ensure effective governance, policy and local adaptation of global strategies

150K+ VOLUNTEER HOURS

Unwavering commitment and hard work have made GCRI fully independent, democratic and resilient in driving its mission and objectives

leveraging a comprehensive ecosystem of top-tier technology and cybersecurity partners to drive forward our mission in security, resilience, and sustainability. Our collaborative network provides state-of-the-art solutions in cloud computing, data analytics, AI, and cybersecurity, ensuring robust protection and innovative capabilities at scale



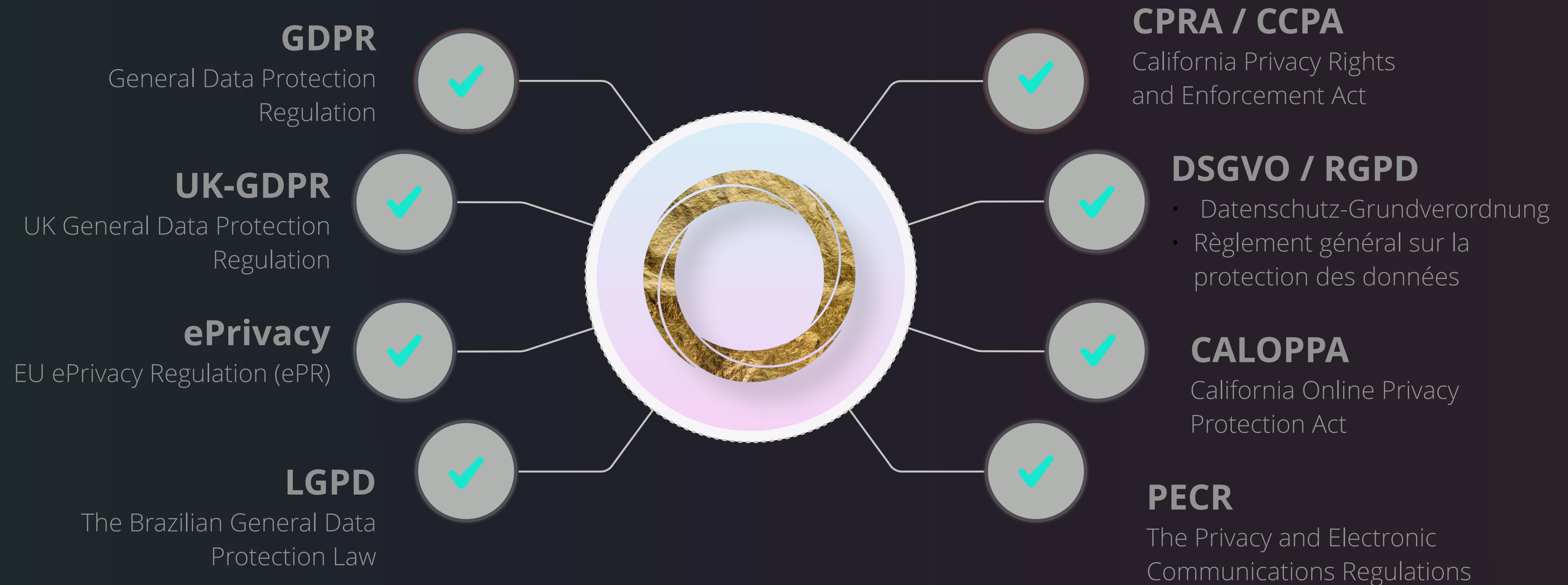
AA level WCAG 2.1

We firmly believe that the internet should be available and accessible to anyone. We are committed to providing a network accessible to the broadest possible audience, regardless of circumstance and ability. GCRI aims to adhere as strictly as possible to the World Wide Web Consortium's (W3C) Web Content Accessibility Guidelines 2.1 (WCAG 2.1) at the AA level. These guidelines explain how to make web content accessible to people with various disabilities. Complying with those guidelines helps us ensure that the website is accessible to all people: blind people, people with motor impairments, visual impairments, cognitive disabilities, and more. DICE utilizes various technologies meant to make it as accessible as possible at all times. We use an accessibility interface that allows persons with specific disabilities to adjust the website's UI (user interface) and design it to their personal needs. Additionally, GCRI uses an AI-based application that runs in the background and optimizes its accessibility level constantly. This application remediates the website's HTML and adapts its functionality and behaviour for screen-readers used by blind users and keyboard functions used by individuals with motor impairments



COMPLIANCE & REGULATIONS

Compliance with data regulations by prioritizing transparency, consent, data minimization, user rights, security, data processing agreements, DPO guidance, and safe data transfers



Engaging with the **Global Risks Alliance (GRA)** allows you to play a pivotal role in addressing global challenges. Together, we can drive impactful change and build a more secure and sustainable world

MEMBERS

Engage and Empower, Be Part of the Solution

- Exclusive Resources
- Global Networking
- Educational Programs
- Regular Updates
- Discussion Forums
- Early Access
- Feedback Channels
- Event Invitations
- Special Reports
- Member Directory

PARTNERS

Strategic Alliances for Sustainable Success

- Joint Projects
- Customized Solutions
- Strategic Alliances
- Capacity Building
- Shared Expertise
- Enhanced Visibility
- Research Support
- Policy Influence
- Resource Sharing
- Advisory Roles

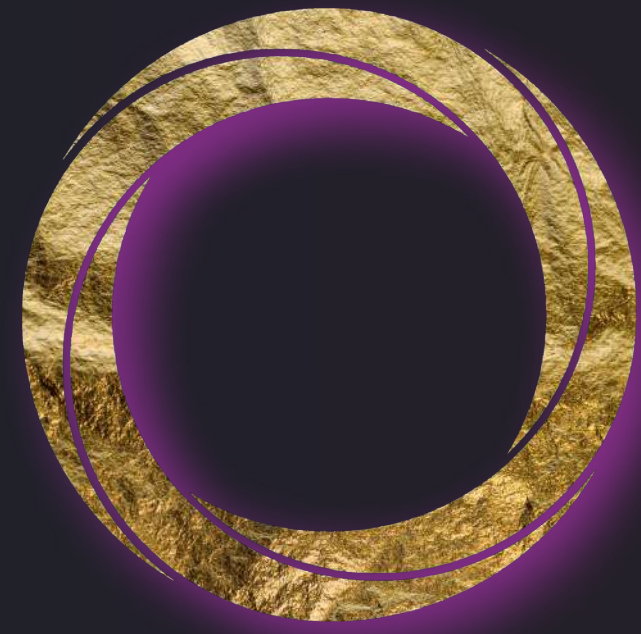
SPONSORS

Champion Innovation, Invest in the Future

- Brand Visibility
- Exclusive Events
- Thought Leadership
- Impact Reporting
- Direct Engagement
- Marketing Opportunities
- Custom Packages
- High-Profile Networking
- Global Reach
- Support Innovation



<https://forms.office.com/r/XPNdeS9BEJ>



Thank You!

TOGETHER, NOTHING IS IMPOSSIBLE!



WWW.THERISK.GLOBAL

Copyright © 2024. All Rights Reserved.